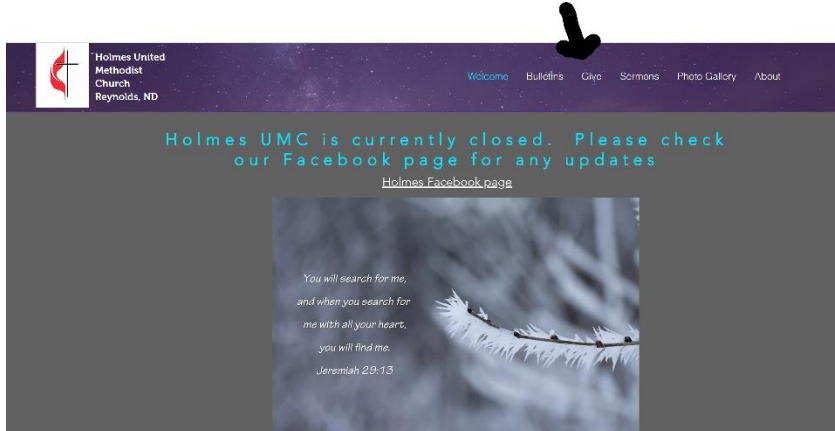
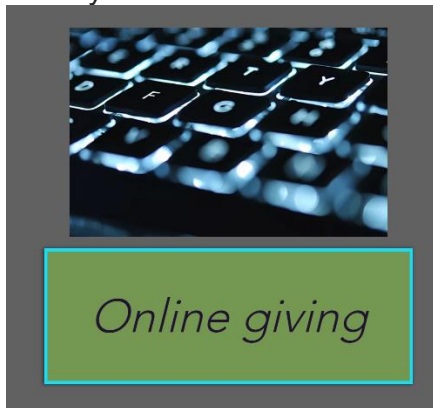


Go to holmesumc.org. You'll see this screen - click on Give at the upper right of the screen.



there you will see this:



Click on Online giving and it will take you to the Vanco site.

There you will have the opportunity to create an online profile so that you can go back in any time. You can choose to save your bank account information or use a credit card. When using your checking account, the entire amount is deposited directly into the church's checking account. When a credit card is used, there are charges so your tithe is reduced by that amount.